



 **DukeArts**
Presents

Is It Thursday Yet?

Social Narrative

Reynolds Industries Theater
at Duke University

Information About the Show

**Friday, Nov. 14, 2025 or
Saturday, Nov. 15, 2025**

Is It Thursday Yet?, is a tapestry of dance, live music and home video footage that invites you into the unique complexities of dancer and choreographer Jenn Freeman's life following her autism spectrum disorder diagnosis at age 33.

The performance takes place at Reynolds Industries Theater. The theater is inside the Duke University Bryan Center.

Runtime:
The performance will last approximately 75 minutes.



Before the Performance

Ticket Information

Tickets for the performance are available on **dukearts.org & tickets.duke.edu.**

You will find more information about the show, ticketing, and a downloadable Social Narrative. You will be able to print the document or view from your mobile device.

Mobile tickets will be sent directly to your inbox from tickets@secure.tickets.duke.edu

The Social Narrative will also be available the day of the performance.

The screenshot shows the DukeArts website interface. At the top is a dark blue navigation bar with the DukeArts logo and links for Calendar, Tickets, Donate, and Menu. The main content area has a white background. The title 'Is It Thursday Yet?' is prominently displayed in a large, dark blue font. To the right of the title is a dark blue button with a white ticket icon and the text 'Get Tickets'. Below the title, the dates 'Nov 14 - Nov 15' and the venue 'Reynolds Industries Theater' are listed on the left, while 'Presented by Duke Arts Presents' is on the right. At the bottom is a large photograph of a performer in a red dress on a stage, with a blurred, colorful light effect on the left and a bookshelf with stage lights on the right. A purple arrow points from the right edge of the image towards the 'Get Tickets' button, with the text 'Get Tickets Button' inside it.

Before the Performance

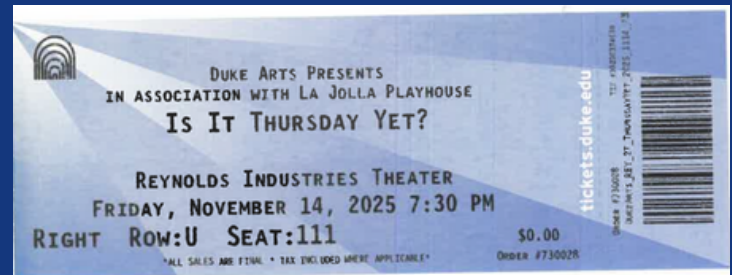
Ticket Information

Tickets may be purchased:

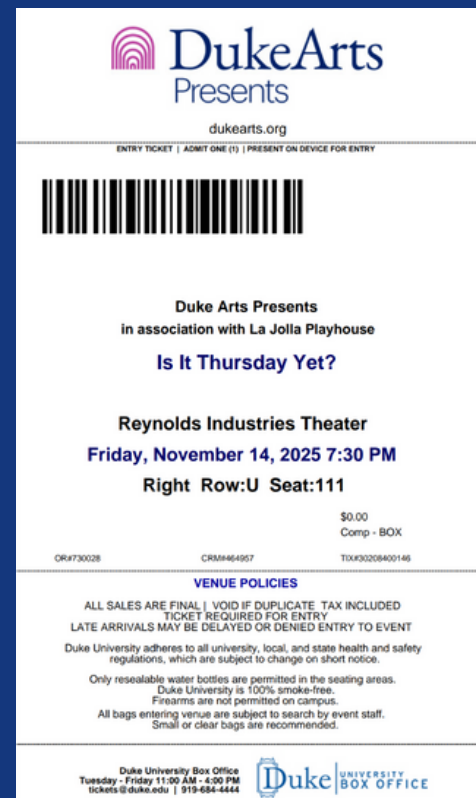
- **Online:**
 - tickets.duke.edu
- **By phone:**
 - 919.684.444
- **In-person:**
 - Duke University Box Office, 125 Science Drive, Durham, NC 27708
 - Open Tuesday - Friday, 11:00 AM - 4:00 PM

If you order online, you may indicate that you would like your ticket held at the Box Office, where you will pick it up prior to the performance, or you may request mobile tickets. Mobile tickets will arrive via email within the 2 days leading up to the performance. Open the PDF in your email for the usher to scan on your phone, or print it at home and bring it to the theater.

Physical Ticket Example:



Mobile Ticket Example:

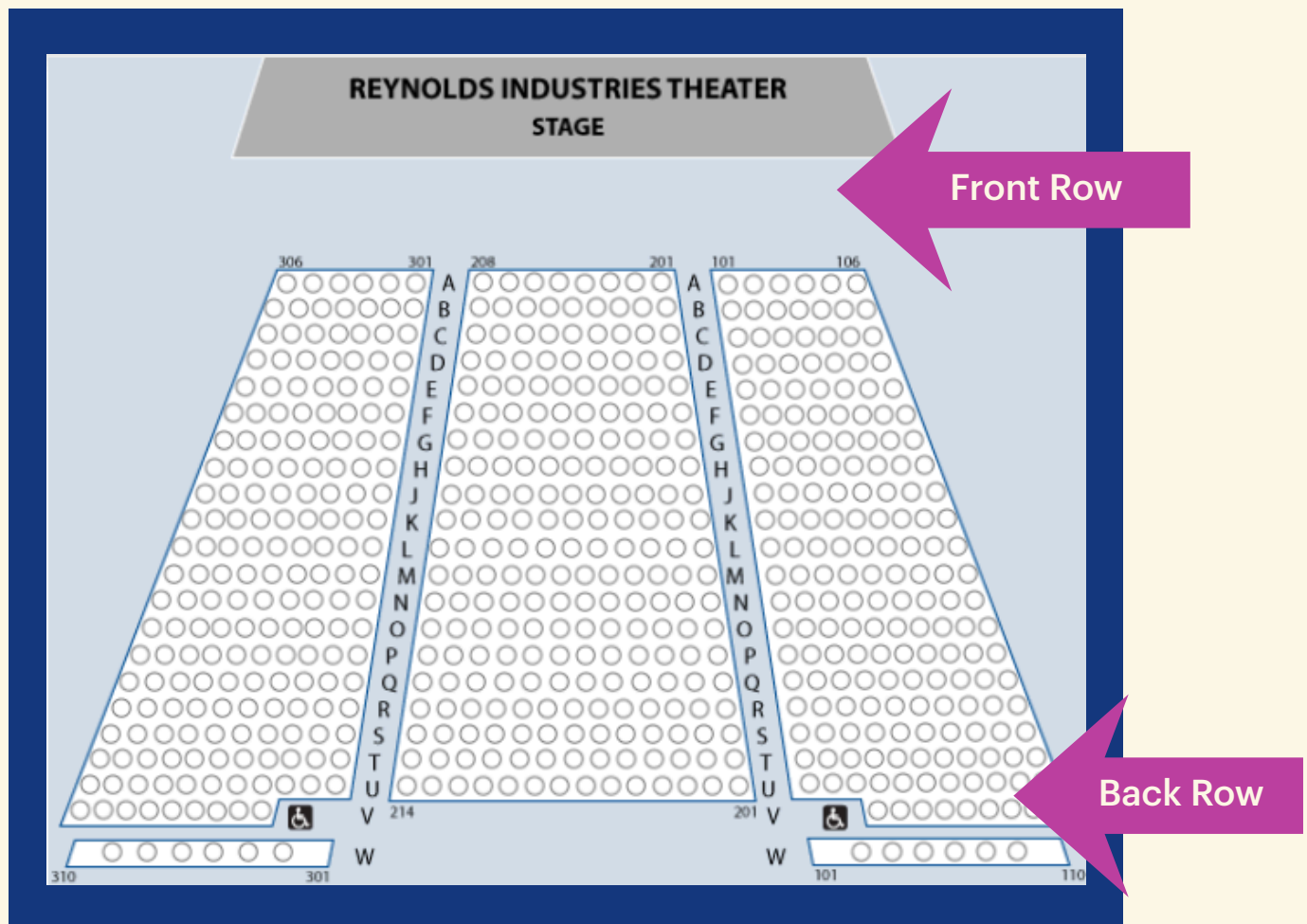


Before the Performance

Choosing Tickets

Before purchasing your ticket, you may want to keep in mind:

- It is typically louder closer to the stage.
- If you think you may need to go to the lobby during the performance, sitting near the back or an aisle seat can make that easier.
- There are no designated quiet spaces, but the lobby tends to be empty once the performance begins.
- Steps can be steep. If you need a handrail, we recommend that you sit on the far left or right sides.



Arrival: Parking

If you drive to the event, the parking deck entrance is located off at

**125 Science Drive,
Durham, NC.**

The entrance on the right side of the road.

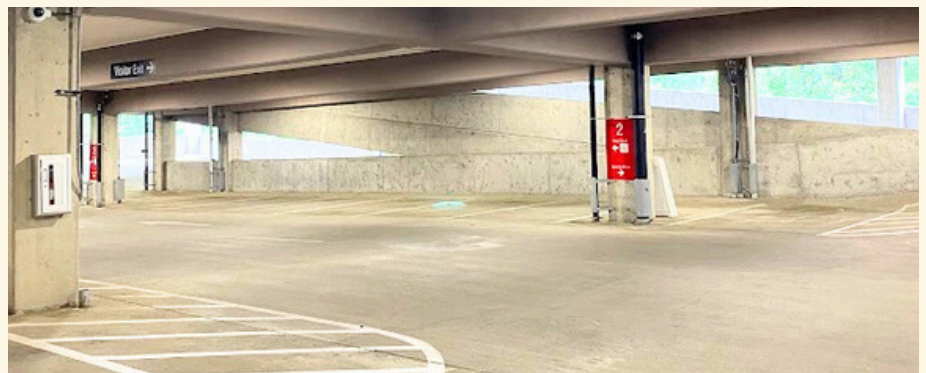
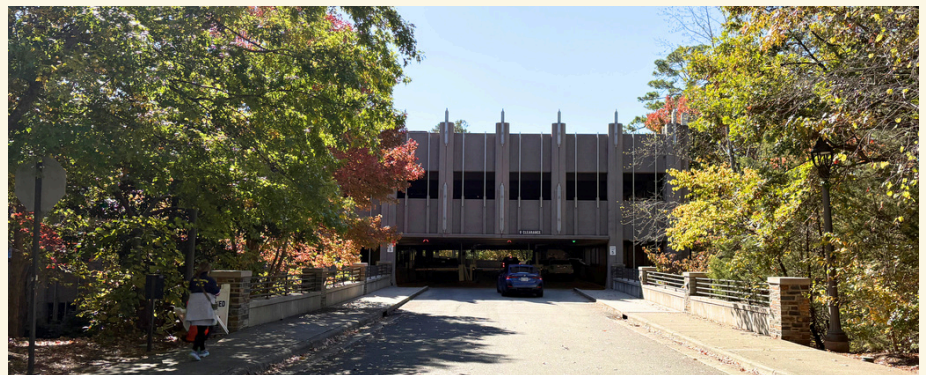
You may park in the Bryan Center parking deck or the Bryan Center parking lot. There will be other cars and people there.

Top photo: entrance to visitor parking

Second photo: street parking

Third photo: entrance to parking garage

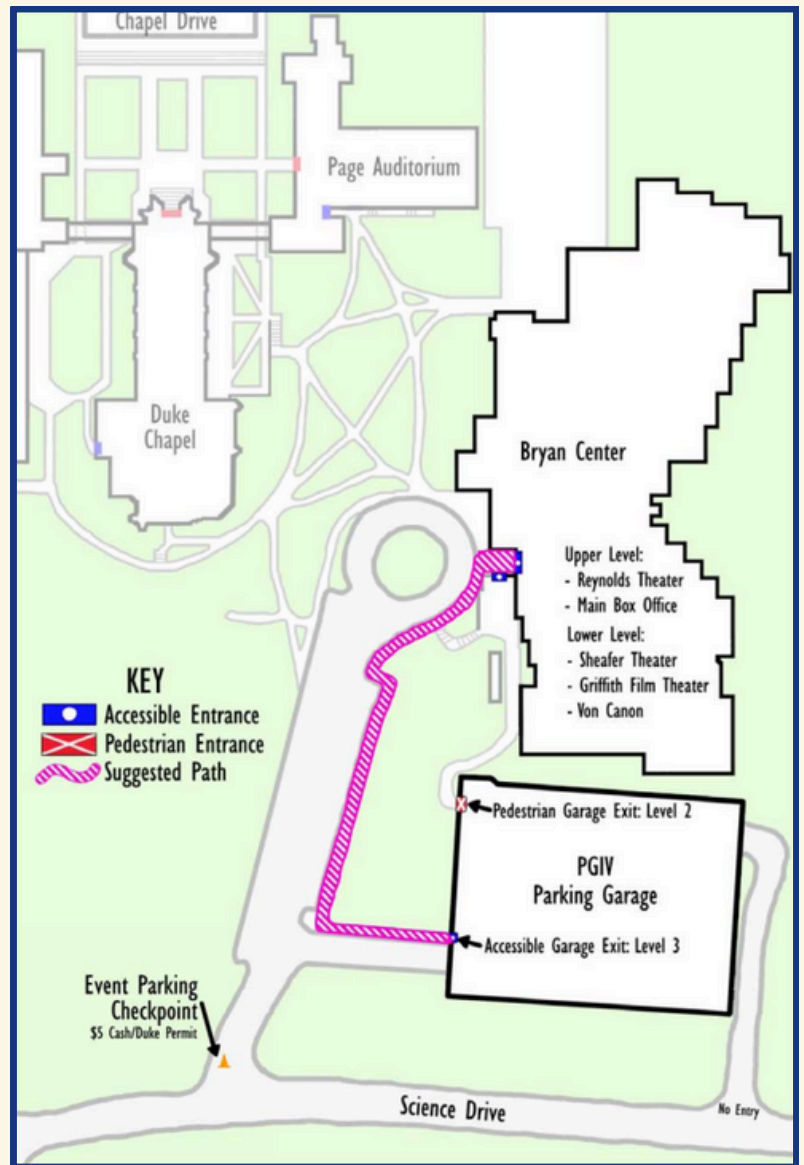
Fourth photo: inside parking garage



Arrival: Parking

After parking, you can take the stairs or elevator to Level 2 or Level 3 (accessible with elevator access).

Exit the Garage and follow the sidewalk to the Bryan Center.



Arrival: If You're Dropped Off

You may be dropped off at the Bryan Center traffic circle. There will be other cars and people nearby.

You will follow the paved walkway to the Bryan Center.



Arrival: Entering the Bryan Center

The Bryan Center is a large building with high ceilings. There will be other people there.

When you arrive, you can stop at the Box Office to pick up your tickets if you have requested that they be left at Will Call.



Inside Bryan Center

Restrooms

If you need to use the restroom, it is a short walk past the Box Office, around the corner and to the right.

The restroom has both regular and accessible stalls.

There are water fountains and chairs nearby.



Inside Bryan Center

Theater Lobby

After you get your tickets, you will go through a big set of doors into the theater lobby.

The ushers can help you find your seats or answer any questions you have.

Food and drinks are not allowed in the theater.



Inside Reynolds Industries Theater

Reynolds Industries Theater

Inside the theater, you will use your tickets and the ushers' directions to find your seats. The theater is large, with tiered seating.

You might sit near people you don't know, but you will stay with the people you came with.



Inside Reynolds Industries Theater

During the Show

When the show starts, the lights will dim and the performers will be on stage. Most people will sit quietly to watch.

Some people may laugh or clap during the show.



Inside Reynolds Industries Theater

Who Will You See On Stage...



Jenn Freeman is a dancer and will perform on the stage. This is their picture.



Holland Andrews is a musician and composer and will perform on the stage. This is their picture.



Price McGuffey is a percussionist and will perform on the stage. This is his picture.

Inside Reynolds Industries Theater

During the Show



Lighting

This show includes bright lights, flashing lights, moments of darkness, and lighting of varying intensity. It also includes multiple television monitors displaying images that may be warped or variable in size and scale.



Sound

This show includes loud sounds; vocal distortion; horns, drums, and vocal music; and repetition.



Content

This show includes recorded audio and video from clinical therapy sessions that include discussions of Jenn Freeman's autism spectrum disorder (ASD) and diagnostic terminology.

Inside Reynolds Industries Theater



End of Show

At the end of the show, people will clap. Sometimes this clapping lasts for a few minutes, and some people might stand up while clapping.

After that, you will leave the theater with the rest of the audience. It might feel crowded, but you will all move slowly together.

Questions? **Contact Us.**

2010 Campus Drive
Box 90757
Durham, NC 27708
919.684.0540
arts@duke.edu

